

- 1 Sort the activities into the table depending on approximately how long each one takes to complete.

travel to school	wash and dry laundry	get dressed
travel to the Moon	watch a TV show	listen to a song
eat a small chocolate bar	sneeze	write your name

Less than 10 seconds	Less than 1 minute	Less than 5 minutes	Less than 1 hour	More than 1 hour

- 2 Complete the statements.

- a) one minute =  seconds      c) one day =  hours  
 2 minutes =  seconds      3 days =  hours  
 4 minutes =  seconds      12 days =  hours  
 eighty minutes =  seconds      thirty days =  hours
- b) 1 hour =  minutes      d) 1 minute =  seconds  
 5 hours =  minutes      1 hour =  minutes  
 ten hours =  minutes      1 hour =  seconds  
 15 hours =  minutes      2 hours =  seconds

How did you work this out? Talk about it with a partner.

- 3 Write <, > or = to complete the statements.

5 minutes  5 seconds       $\frac{1}{2}$  hour  60 minutes  
 5 minutes  50 seconds       $\frac{1}{2}$  hour  6 minutes  
 5 minutes  500 seconds      30 minutes   $\frac{1}{2}$  hour

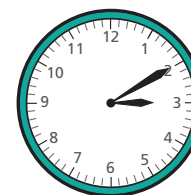
- 4 Huan ran a race in 3.5 minutes.

Eva ran the race in 312 seconds.

Who was quicker?

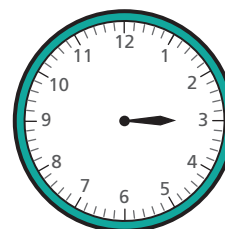
How much quicker were they?

- 5 The time is 10 past 3

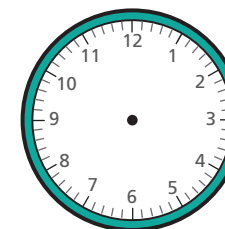


Draw hands on the clocks to show what time it will be:

- a) in 10 minutes



- b) in 60 minutes



3 Write  $<$ ,  $>$  or  $=$  to complete the statements.

5 minutes  5 seconds       $\frac{1}{2}$  hour  60 minutes  
 5 minutes  50 seconds       $\frac{1}{2}$  hour  6 minutes  
 5 minutes  500 seconds      30 minutes   $\frac{1}{2}$  hour

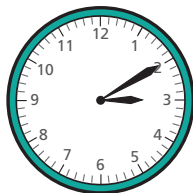
4 Huan ran a race in 3.5 minutes.

Eva ran the race in 312 seconds.

Who was quicker?

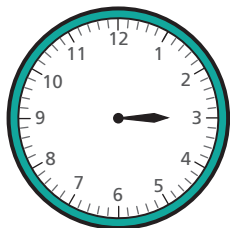
How much quicker were they?

5 The time is 10 past 3

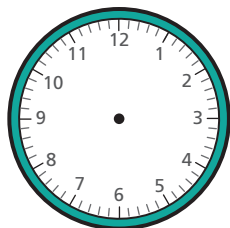


Draw hands on the clocks to show what time it will be:

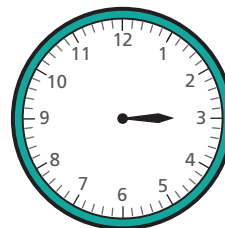
a) in 10 minutes



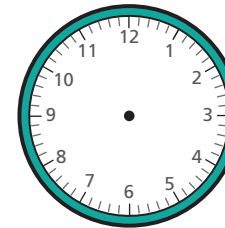
b) in 60 minutes



c) in 120 seconds



d) in 1.5 hours



6 Scott, Esther and Dani timed how long it took to have a shower.

Scott =  $\frac{1}{10}$  hour    Esther = 315 seconds    Dani = 3 mins 27 secs

How long did it take them in total?

What was the difference between the longest and shortest times?

7 Brett, Annie, Aisha and Filip are going on holiday.

Here are the total lengths of their journeys.

Brett

12 hours longer than Filip

Annie

$1\frac{1}{4}$  days

Aisha

twice as long as Brett

Filip

360 minutes

Work out how many hours it took each person.

Place them in order from the shortest to the longest journey.

