

## Adding More

Complete the calculations by adding more.



1



$$1 + \square = \square$$



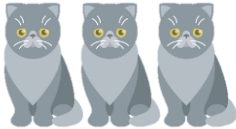
6



$$6 + \square = \square$$



4



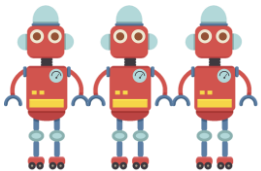
$$\square = 4 + \square$$



2



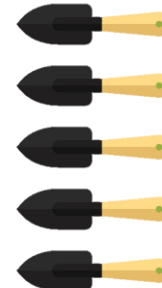
$$\square = 2 + \square$$



3



$$\square + \square = \square$$



5



$$\square + \square = \square$$

# Adding More

Complete the calculations by adding more.



1



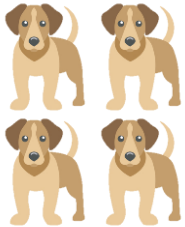
$$1 + 4 = 5$$



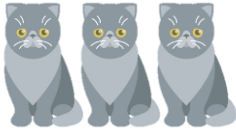
6



$$6 + 2 = 8$$



4



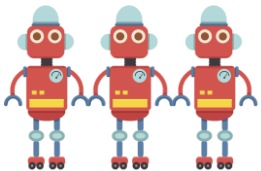
$$7 = 4 + 3$$



2



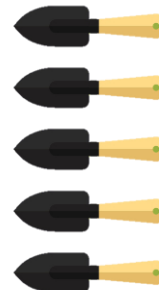
$$5 = 2 + 3$$



3



$$3 + 5 = 8$$



5



$$5 + 2 = 7$$