

Can you name any superheroes?



# Monday 19<sup>th</sup> April 2021

Reception L.O: To infer how a character is feeling.

**Must:** Can listen to a story with concentration.

**Should:** Can explain what they think the character is feeling.

**Could:** Write a sentence about Traction man.

Year 1 L.O: To infer how a character is feeling.

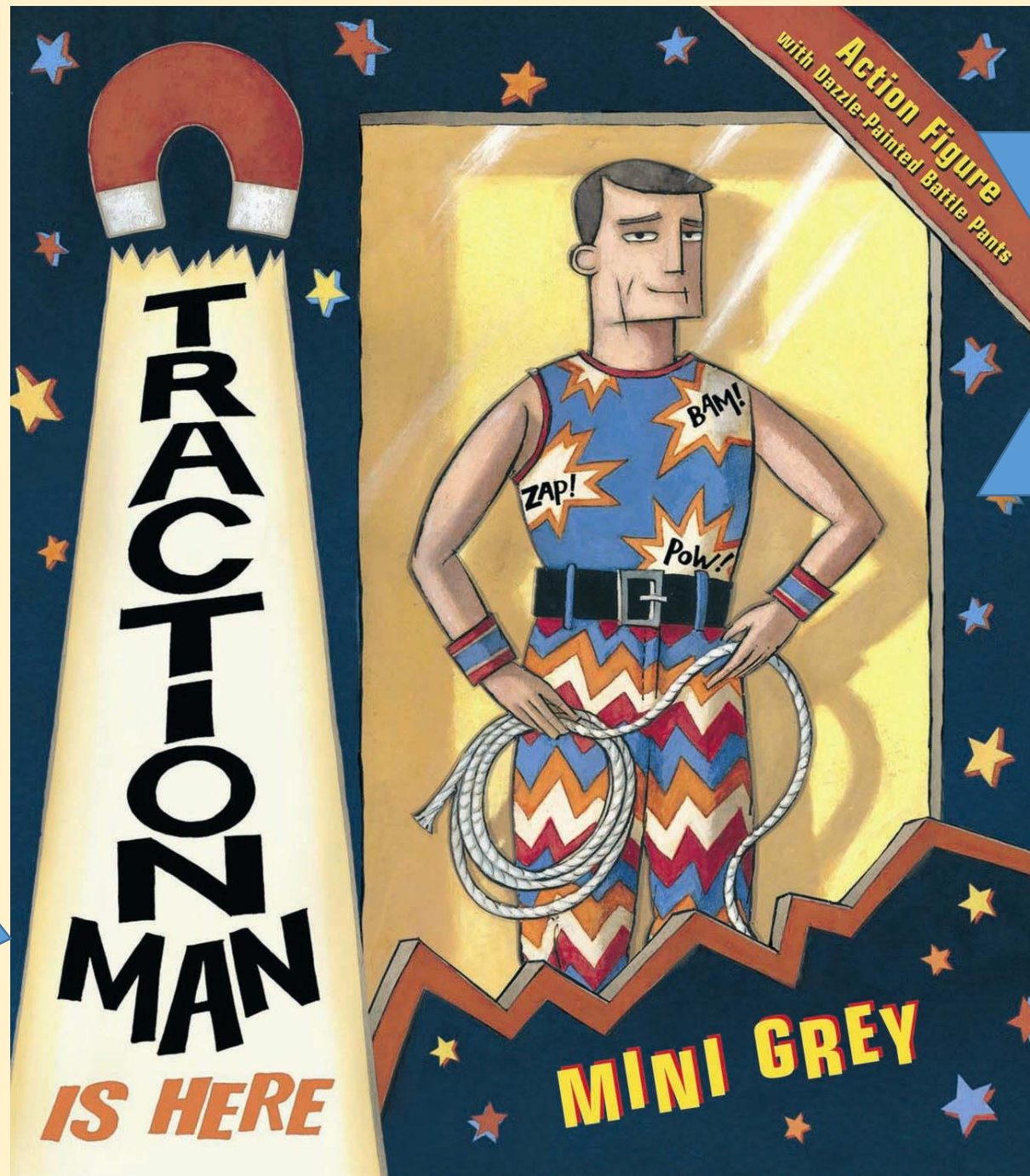
**Must:** Can identify feelings.

**Should:** Role play as a character and explain how they are feeling.

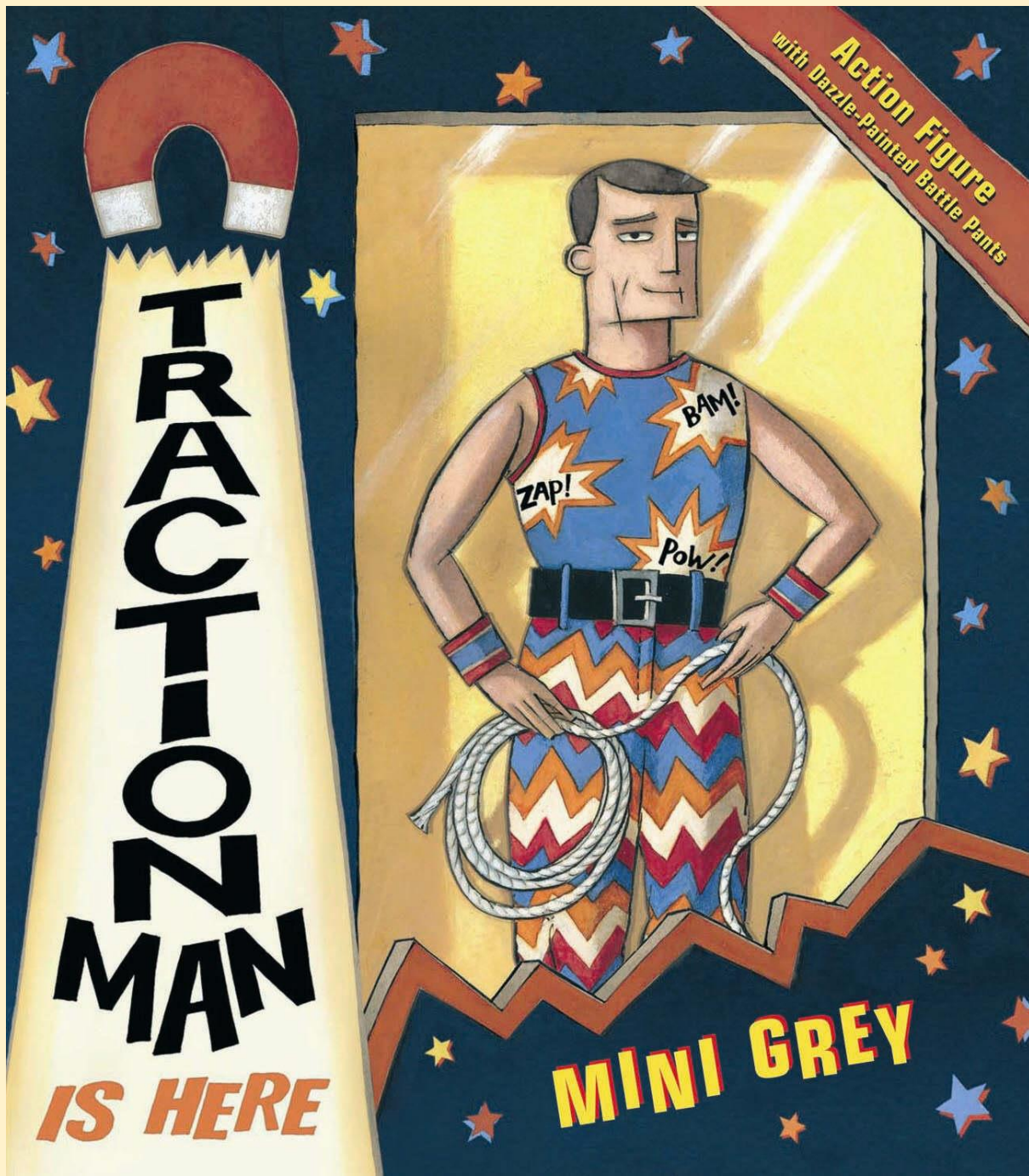
**Could:** Predict what will happen in the story.



What do you think the story is about?



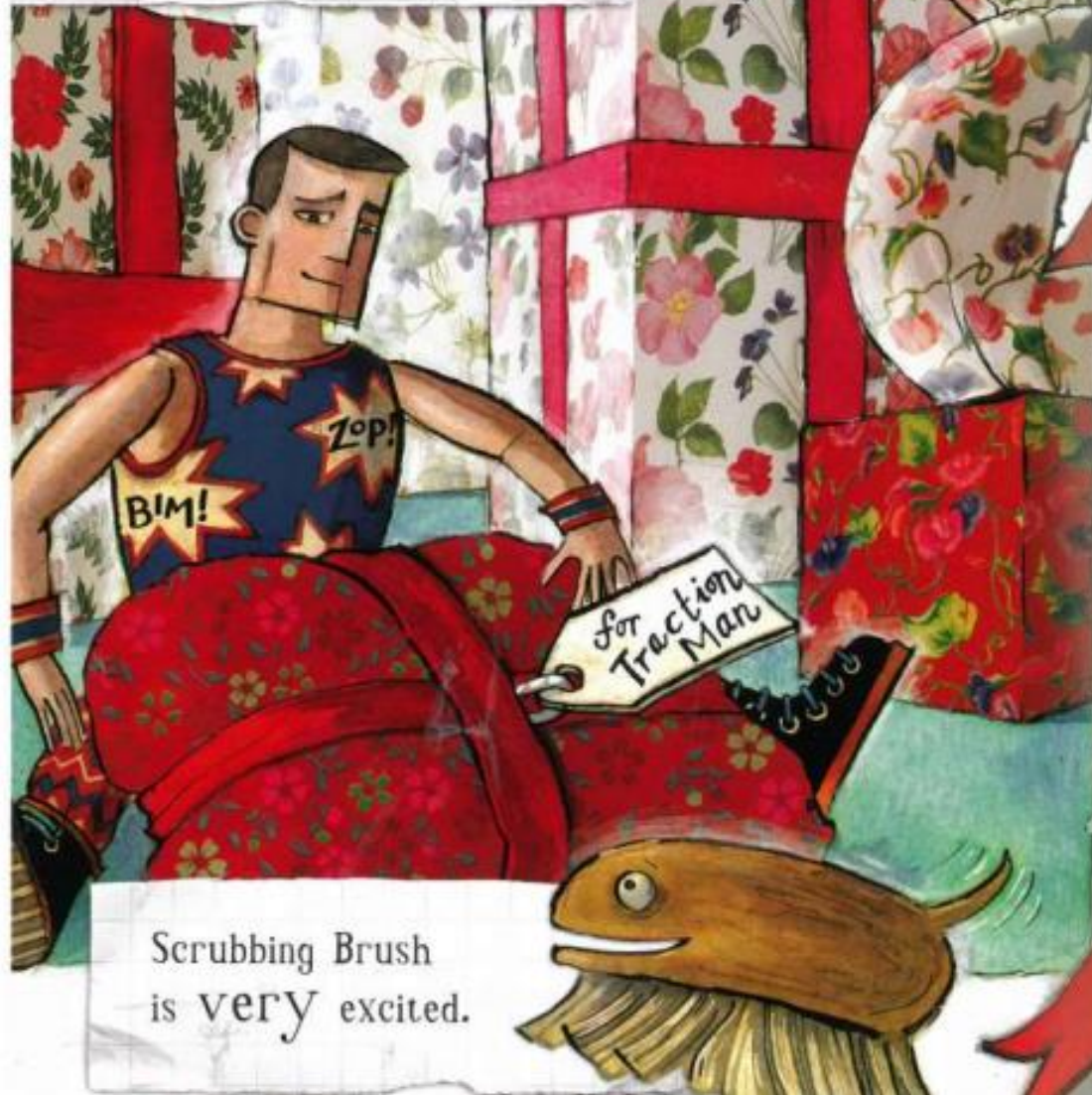
What clues are there?



[Traction Man is here - Books Alive!](#)  
[Read Aloud children's book - Bing video](#)



Everyone has a present to open.  
Even Traction Man.

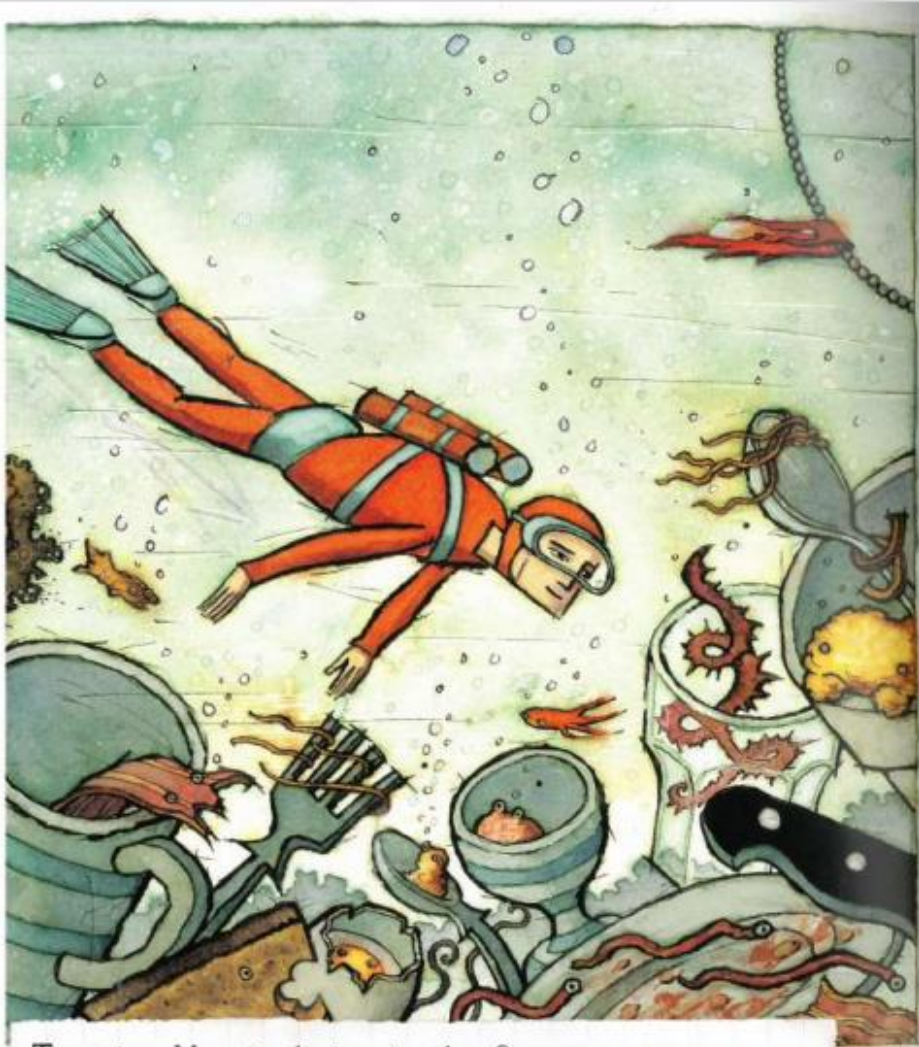


Scrubbing Brush  
is **very** excited.

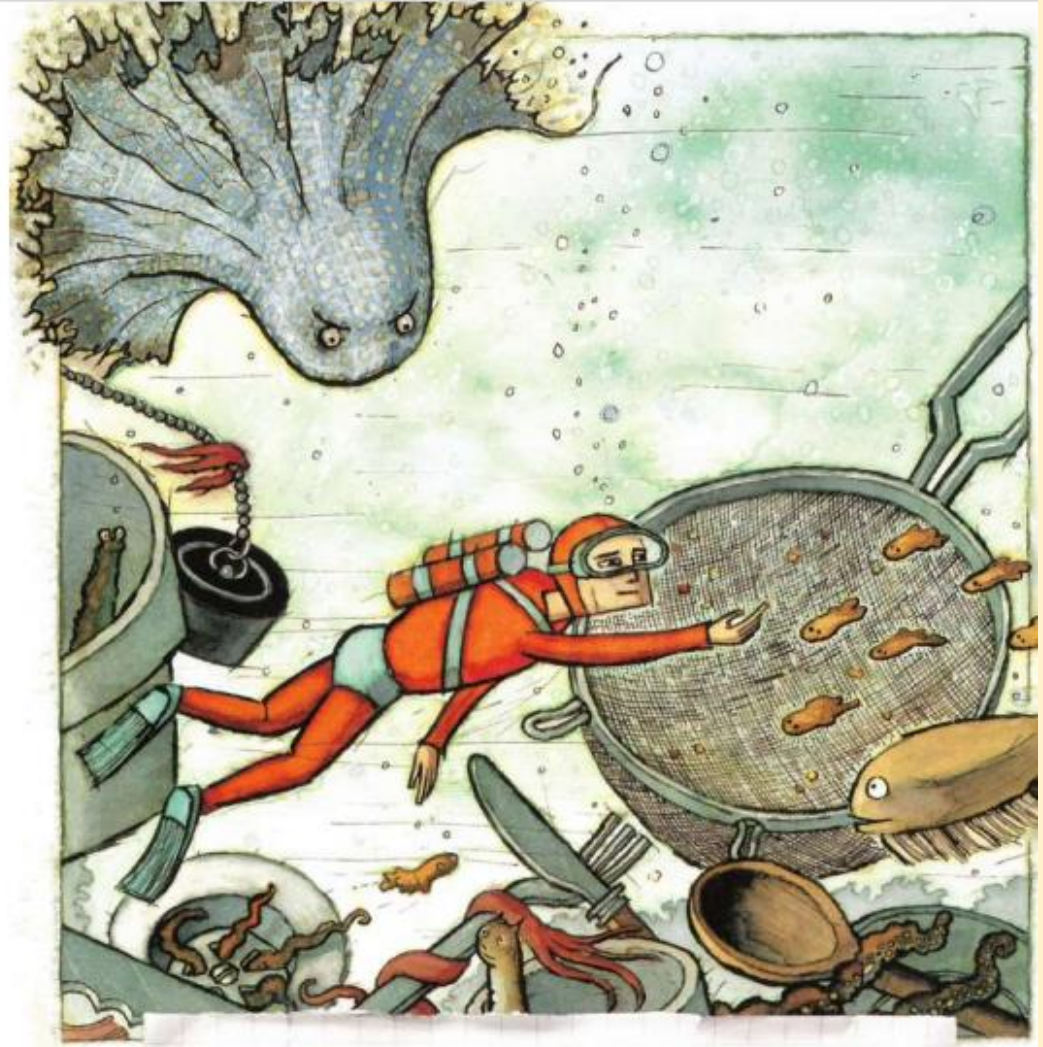
How do you think  
Traction man is feeling  
about his present?



In your pairs can you role play as Traction Man and scrubbing brush in these scenarios?



Traction Man is diving in the foamy waters of the Sink (wearing his Sub-Aqua Suit, Fluorescent Flippers and Infra-Red Mask).



He is searching for the Lost Wreck of the Sieve.





Traction Man is crawling through the overgrown shrubbery near the Pond, wearing Jungle Pants, Camouflage Vest, and Sweaty Bandanna.



The Dollies have all been buried up to their waists in the Flower Bed by Wicked Professor Spade.



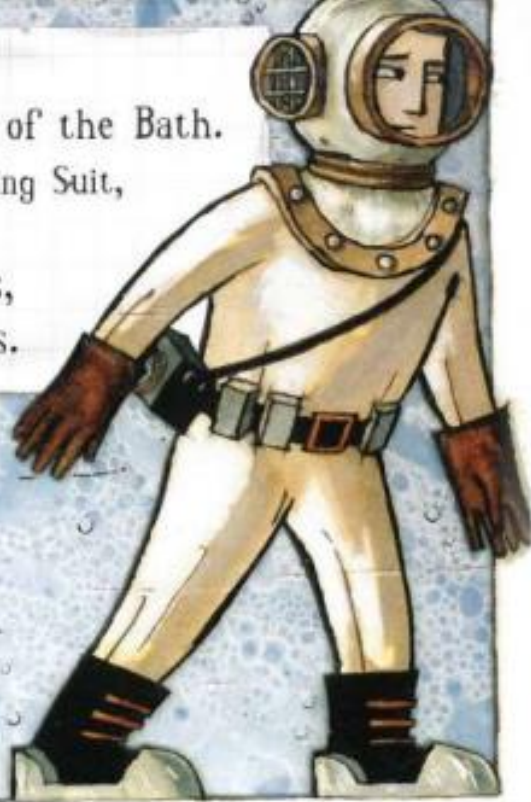
"Oh, Traction Man, how can we repay you?"  
"Think nothing of it, Ladies."



Traction Man and Scrubbing Brush are  
deep, deep down at the Bottom of the Bath.

(Traction Man is wearing his Deep-Sea Diving Suit,  
Brass Helmet and Metal Shoes.)

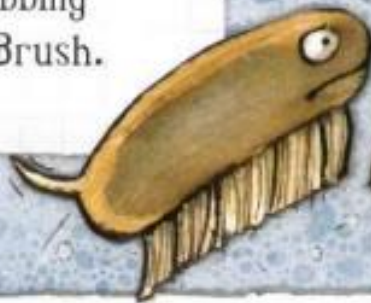
Somewhere down here, legend says,  
are the Mysterious Toes.



Oh no!  
The Toes have  
suddenly appeared  
and have grabbed  
Scrubbing  
Brush!

"No Mysterious Toes.  
are stealing away  
with my brave Pet!  
Take that!  
And that!"

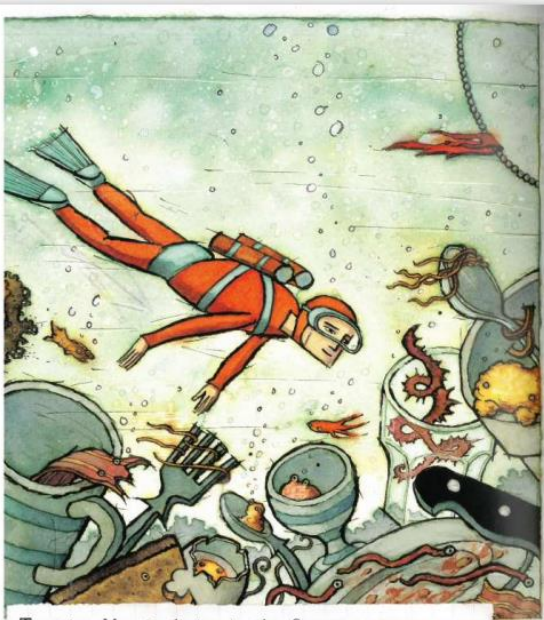
The Toes cannot  
stand it and give  
back Scrubbing  
Brush.



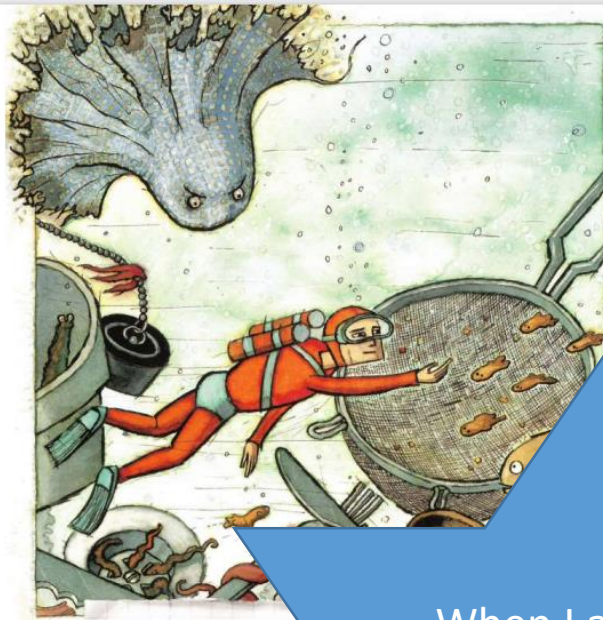
Traction Man  
takes some  
photographs of the  
Mysterious Toes.







Traction Man is diving in the foamy waters of the Sink (wearing his Sub-Aqua Suit, Fluorescent Flippers and Infra-Red Mask).



He is searching for the Lost Wrecks



Traction Man is crawling through the overgrown shrubbery near the Pond, wearing Jungle Pants, Camouflage Vest, and Sweaty Bandanna.

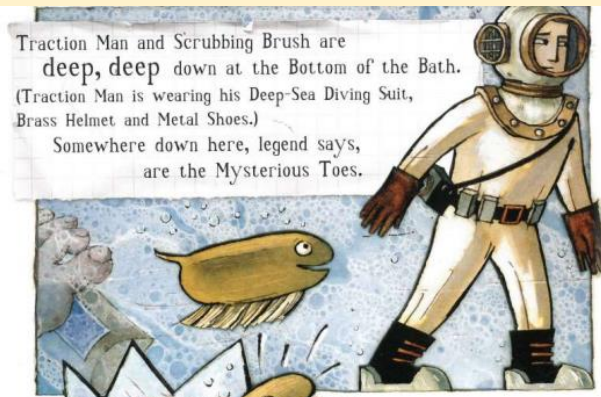
ha ha ha!



They have all been buried up to their waists in the Grave Bed by Wicked Professor Spade.

I think it's someone's bath-time...

When I ask you to freeze, tell me how your character is feeling in that moment.



Traction Man and Scrubbing Brush are deep, deep down at the Bottom of the Bath. (Traction Man is wearing his Deep-Sea Diving Suit, Brass Helmet and Metal Shoes.) Somewhere down here, legend says, are the Mysterious Toes.



"No Mysterious Toes are stealing away with my brave Pet! Take that! And that!"

The Toes cannot stand it and give back Scrubbing Brush.

Traction Man takes some photographs of the Mysterious Toes.



Oh no! The Toes have suddenly appeared and have grabbed Scrubbing Brush!



"Oh, Traction Man, how can we repay you?" "Think nothing of it, Ladies. All in a day's work."



Task:

In your thought bubble write a sentence how your character was feeling.

Challenge:  
Can you predict  
how the story  
will end?

